

**FY 2015 Actual Required Local Effort (RLE) for the Standards of Quality
Compared to Actual Local Expenditures for Operations**

RLE Based on Chapter 665, 2015 Virginia Acts of Assembly , and
Final March 31, 2015, Average Daily Membership (ADM)

Div. Num.	Division Name	FY 2015 Required Local Effort	FY 2015 Actual Local Expenditures for Operations	FY 2015 Actual Local Expenditures for Operations Above RLE	Percent of FY 2015 Actual Local Expenditures for Operations Above RLE
001	ACCOMACK	12,515,876	16,127,137	3,611,261	28.85%
002	ALBEMARLE	52,339,980	114,688,522	62,348,542	119.12%
003	ALLEGHANY	3,735,089	8,539,544	4,804,455	128.63%
004	AMELIA	3,737,996	4,598,570	860,574	23.02%
005	AMHERST	7,978,570	13,441,483	5,462,913	68.47%
006	APPOMATTOX	4,285,114	5,303,697	1,018,583	23.77%
007	ARLINGTON	130,615,640	355,353,119	224,737,479	172.06%
008	AUGUSTA	20,954,053	39,444,343	18,490,290	88.24%
009	BATH	3,345,395	7,535,987	4,190,592	125.26%
010	BEDFORD	18,006,441	29,212,571	11,206,130	62.23%
011	BLAND	1,770,174	2,465,007	694,833	39.25%
012	BOTETOURT	10,740,820	23,231,404	12,490,584	116.29%
013	BRUNSWICK	3,849,048	4,389,850	540,802	14.05%
014	BUCHANAN	7,318,546	14,837,201	7,518,655	102.73%
015	BUCKINGHAM	4,636,296	6,053,767	1,417,471	30.57%
016	CAMPBELL	12,590,468	25,959,140	13,368,672	106.18%
017	CAROLINE	8,770,317	11,937,478	3,167,161	36.11%
018	CARROLL	6,358,932	12,477,082	6,118,150	96.21%
019	CHARLES CITY	2,277,695	4,262,066	1,984,371	87.12%
020	CHARLOTTE	3,284,255	3,767,070	482,815	14.70%
021	CHESTERFIELD	122,925,348	217,814,071	94,888,723	77.19%
022	CLARKE	6,470,682	11,462,074	4,991,392	77.14%
023	CRAIG	1,403,246	2,161,576	758,330	54.04%
024	CULPEPER	16,417,408	27,831,717	11,414,309	69.53%
025	CUMBERLAND	2,365,280	3,566,017	1,200,737	50.77%
026	DICKENSON	4,055,474	6,454,456	2,398,982	59.15%
027	DINWIDDIE	8,102,534	12,448,383	4,345,849	53.64%
028	ESSEX	4,014,791	6,289,066	2,274,275	56.65%
029	FAIRFAX	827,359,677	1,788,223,108	960,863,431	116.14%
030	FAUQUIER	40,380,915	82,121,435	41,740,520	103.37%
031	FLOYD	4,506,903	5,806,351	1,299,448	28.83%
032	FLUVANNA	8,338,483	14,058,662	5,720,179	68.60%
033	FRANKLIN	18,626,605	29,807,247	11,180,642	60.03%
034	FREDERICK	30,075,662	66,609,902	36,534,240	121.47%
035	GILES	4,642,169	6,805,323	2,163,154	46.60%
036	GLOUCESTER	11,436,118	22,960,401	11,524,283	100.77%
037	GOOCHLAND	11,905,754	19,455,361	7,549,607	63.41%
038	GRAYSON	4,430,885	5,726,852	1,295,967	29.25%
039	GREENE	7,054,708	11,410,687	4,355,979	61.75%
040	GREENSVILLE	2,030,232	2,797,923	767,691	37.81%
041	HALIFAX	10,949,254	12,932,117	1,982,863	18.11%
042	HANOVER	44,979,472	72,300,361	27,320,889	60.74%

**FY 2015 Actual Required Local Effort (RLE) for the Standards of Quality
Compared to Actual Local Expenditures for Operations**

RLE Based on Chapter 665, 2015 Virginia Acts of Assembly , and
Final March 31, 2015, Average Daily Membership (ADM)

Div. Num.	Division Name	FY 2015 Required Local Effort	FY 2015 Actual Local Expenditures for Operations	FY 2015 Actual Local Expenditures for Operations Above RLE	Percent of FY 2015 Actual Local Expenditures for Operations Above RLE
043	HENRICO	121,192,776	227,376,742	106,183,966	87.62%
044	HENRY	10,452,395	12,750,235	2,297,840	21.98%
045	HIGHLAND	1,652,649	1,995,994	343,345	20.78%
046	ISLE OF WIGHT	14,205,156	23,611,792	9,406,636	66.22%
047	JAMES CITY	36,571,306	70,174,227	33,602,921	91.88%
048	KING GEORGE	9,817,107	13,644,515	3,827,408	38.99%
049	KING QUEEN	2,649,245	3,478,081	828,836	31.29%
050	KING WILLIAM	4,636,415	8,058,417	3,422,002	73.81%
051	LANCASTER	5,824,927	9,879,476	4,054,549	69.61%
052	LEE	FY15 Data Resubmission Pending			
053	LOUDOUN	265,163,791	632,534,547	367,370,756	138.54%
054	LOUISA	16,894,107	30,994,889	14,100,782	83.47%
055	LUNENBURG	2,654,296	2,932,354	278,058	10.48%
056	MADISON	5,067,739	9,213,570	4,145,831	81.81%
057	MATHEWS	4,280,818	6,496,160	2,215,342	51.75%
058	MECKLENBURG	10,506,907	13,514,234	3,007,327	28.62%
059	MIDDLESEX	6,008,488	8,092,013	2,083,525	34.68%
060	MONTGOMERY	22,965,211	43,179,598	20,214,387	88.02%
062	NELSON	7,194,554	14,174,700	6,980,146	97.02%
063	NEW KENT	7,640,807	12,611,885	4,971,078	65.06%
065	NORTHAMPTON	5,480,206	7,326,317	1,846,111	33.69%
066	NORTHUMBERLAND	6,685,397	10,369,590	3,684,193	55.11%
067	NOTTOWAY	3,585,724	4,057,061	471,337	13.14%
068	ORANGE	10,897,376	17,980,213	7,082,837	65.00%
069	PAGE	6,178,700	10,134,544	3,955,844	64.02%
070	PATRICK	5,355,906	5,730,158	374,252	6.99%
071	PITTSYLVANIA	14,430,516	16,684,587	2,254,071	15.62%
072	POWHATAN	10,015,607	20,318,527	10,302,920	102.87%
073	PRINCE EDWARD	4,310,865	7,672,387	3,361,522	77.98%
074	PRINCE GEORGE	9,928,016	11,016,917	1,088,901	10.97%
075	PRINCE WILLIAM	204,114,476	399,641,676	195,527,200	95.79%
077	PULASKI	8,641,028	13,287,060	4,646,032	53.77%
078	RAPPAHANNOCK	4,817,295	8,373,165	3,555,870	73.81%
079	RICHMOND	2,883,785	5,116,469	2,232,684	77.42%
080	ROANOKE	32,012,032	58,919,779	26,907,747	84.06%
081	ROCKBRIDGE	8,537,960	13,732,918	5,194,958	60.85%
082	ROCKINGHAM	24,690,183	55,097,702	30,407,519	123.16%
083	RUSSELL	6,523,614	7,114,249	590,635	9.05%
084	SCOTT	4,918,652	5,431,156	512,504	10.42%
085	SHENANDOAH	13,000,689	24,743,656	11,742,967	90.33%
086	SMYTH	6,556,153	9,159,521	2,603,368	39.71%
087	SOUTHAMPTON	4,915,639	9,163,533	4,247,894	86.42%

**FY 2015 Actual Required Local Effort (RLE) for the Standards of Quality
Compared to Actual Local Expenditures for Operations**

RLE Based on Chapter 665, 2015 Virginia Acts of Assembly , and
Final March 31, 2015, Average Daily Membership (ADM)

Div. Num.	Division Name	FY 2015 Required Local Effort	FY 2015 Actual Local Expenditures for Operations	FY 2015 Actual Local Expenditures for Operations Above RLE	Percent of FY 2015 Actual Local Expenditures for Operations Above RLE
088	SPOTSYLVANIA	51,630,208	98,168,093	46,537,885	90.14%
089	STAFFORD	55,670,716	104,239,921	48,569,205	87.24%
090	SURRY	5,194,018	11,714,165	6,520,147	125.53%
091	SUSSEX	2,954,226	8,173,171	5,218,945	176.66%
092	TAZEWELL	10,535,040	13,691,495	3,156,455	29.96%
093	WARREN	12,196,149	21,187,911	8,991,762	73.73%
094	WASHINGTON	16,239,773	28,835,735	12,595,962	77.56%
095	WESTMORELAND	5,966,004	7,122,322	1,156,318	19.38%
096	WISE	8,982,547	15,155,941	6,173,394	68.73%
097	WYTHE	7,996,147	12,187,765	4,191,618	52.42%
098	YORK	30,582,231	53,769,892	23,187,661	75.82%
101	ALEXANDRIA	73,646,657	193,174,909	119,528,252	162.30%
102	BRISTOL	4,217,858	5,800,840	1,582,982	37.53%
103	BUENA VISTA	1,175,787	2,186,562	1,010,775	85.97%
104	CHARLOTTESVILLE	17,500,957	44,059,875	26,558,918	151.76%
106	COLONIAL HEIGHTS	7,508,969	19,180,413	11,671,444	155.43%
107	COVINGTON	1,724,896	4,287,574	2,562,678	148.57%
108	DANVILLE	9,968,857	15,431,204	5,462,347	54.79%
109	FALLS CHURCH	12,580,449	37,234,792	24,654,343	195.97%
110	FREDERICKSBURG	13,616,031	26,042,607	12,426,576	91.26%
111	GALAX	2,337,495	3,191,142	853,647	36.52%
112	HAMPTON	34,735,414	73,091,339	38,355,925	110.42%
113	HARRISONBURG	13,774,962	29,013,953	15,238,991	110.63%
114	HOPEWELL	5,760,029	10,131,150	4,371,121	75.89%
115	LYNCHBURG	18,769,234	36,525,952	17,756,718	94.61%
116	MARTINSVILLE	3,101,539	6,249,041	3,147,502	101.48%
117	NEWPORT NEWS	49,554,402	103,197,624	53,643,222	108.25%
118	NORFOLK	56,091,095	113,876,045	57,784,950	103.02%
119	NORTON	1,655,486	1,774,568	119,082	7.19%
120	PETERSBURG	6,166,143	11,468,933	5,302,790	86.00%
121	PORTSMOUTH	22,954,727	51,288,673	28,333,946	123.43%
122	RADFORD	2,653,844	4,706,651	2,052,807	77.35%
123	RICHMOND CITY	71,610,118	131,504,605	59,894,487	83.64%
124	ROANOKE CITY	28,917,592	71,077,054	42,159,462	145.79%
126	STAUNTON	5,957,060	10,791,000	4,833,940	81.15%
127	SUFFOLK	28,807,547	47,469,572	18,662,025	64.78%
128	VIRGINIA BEACH	161,336,687	356,375,286	195,038,599	120.89%
130	WAYNESBORO	6,141,772	12,953,041	6,811,269	110.90%
131	WILLIAMSBURG	4,668,873	7,242,362	2,573,489	55.12%
132	WINCHESTER	11,485,838	27,646,719	16,160,881	140.70%
134	FAIRFAX CITY	17,614,678	35,757,313	18,142,635	103.00%
135	FRANKLIN CITY	2,257,880	5,405,440	3,147,560	139.40%

**FY 2015 Actual Required Local Effort (RLE) for the Standards of Quality
Compared to Actual Local Expenditures for Operations**

RLE Based on Chapter 665, 2015 Virginia Acts of Assembly , and
Final March 31, 2015, Average Daily Membership (ADM)

Div. Num.	Division Name	FY 2015 Required Local Effort	FY 2015 Actual Local Expenditures for Operations	FY 2015 Actual Local Expenditures for Operations Above RLE	Percent of FY 2015 Actual Local Expenditures for Operations Above RLE
136	CHESAPEAKE	87,472,349	179,507,860	92,035,511	105.22%
137	LEXINGTON	1,887,766	2,966,511	1,078,745	57.14%
138	EMPORIA	1,690,101	2,523,405	833,304	49.30%
139	SALEM	8,351,440	18,309,017	9,957,577	119.23%
142	POQUOSON	4,767,692	9,456,931	4,689,239	98.35%
143	MANASSAS	17,875,966	46,150,952	28,274,986	158.17%
144	MANASSAS PARK	5,937,909	11,522,472	5,584,563	94.05%
202	COLONIAL BEACH	1,455,866	2,098,893	643,027	44.17%
207	WEST POINT	1,230,346	4,724,108	3,493,762	283.97%

Summary

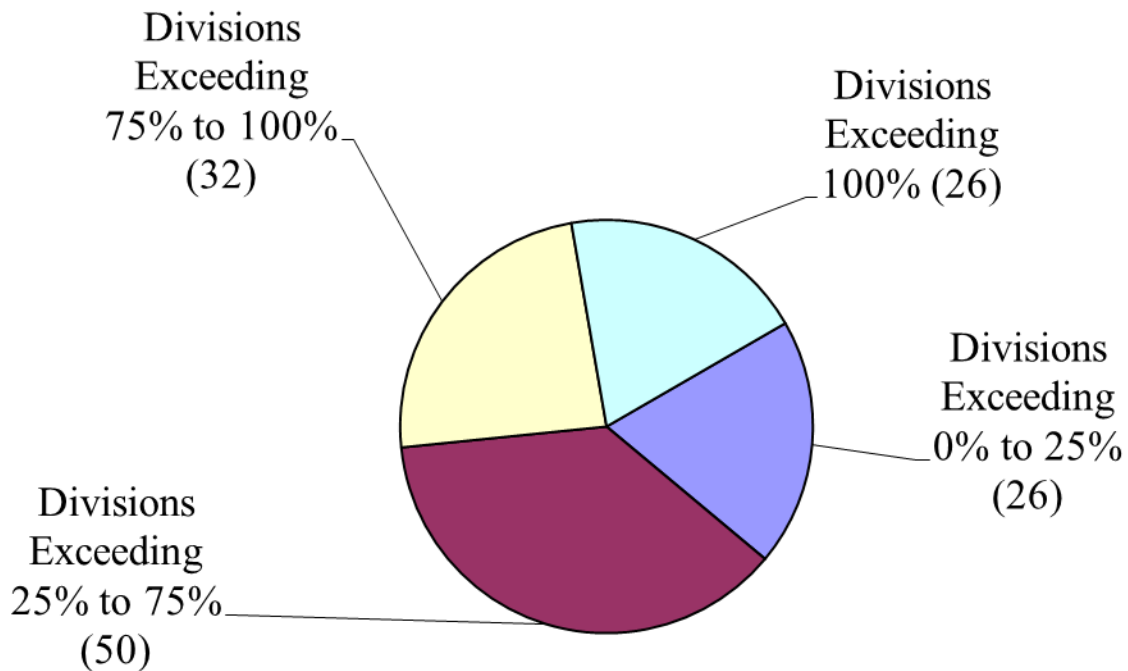
Actual Required Local Match for Incentive and Lottery Accounts *Fiscal*

Year 2015

All reporting school divisions met required local match for all Incentive and Lottery accounts in which they elected to participate in fiscal year 2015. The funds used to meet required local match are actual local operational expenditures that are above those used to meet required local effort on the Standards of Quality. The range of actual local support in excess of the required amounts for local effort and local match is:

- Low – Lunenburg – 0.00%
- High – West Point – 281.98%
- The average actual local operational expenditure in excess of the required level for fiscal year 2015: 68.74%

Distribution - Percent of FY15 Actual Local Expenditures for Operations Above Required Local Effort and Required Local Match



FY 2015 Actual Required Local Match (RLM) for Incentive and Lottery Accounts Compared to Actual Local Expenditures for Operations Above Required Local Effort (RLE)

RLM Based on Chapter 665, 2015 Virginia Acts of Assembly,
Final March 31, 2015, Average Daily Membership (ADM), and Actual Participation Data

Div. Num.	Division Name	FY 2015 Required Local Match	FY 2015 Actual Local Expenditures for Operations Above RLE	FY 2015 Actual Local Expenditures for Operations Above RLE and RLM	Percent of FY 2015 Actual Local Expenditures for Operations Above RLE and RLM
001	ACCOMACK	1,316,651	3,958,756	2,642,105	19.10%
002	ALBEMARLE	1,173,853	62,348,542	61,174,689	114.32%
003	ALLEGHANY	219,496	4,861,153	4,641,657	117.37%
004	AMELIA	270,420	944,670	674,250	16.82%
005	AMHERST	565,225	5,600,247	5,035,022	58.93%
006	APPOMATTOX	341,790	1,031,264	689,474	14.90%
007	ARLINGTON	4,369,436	229,749,652	225,380,216	166.97%
008	AUGUSTA	1,253,217	19,396,863	18,143,646	81.70%
009	BATH	118,320	4,276,720	4,158,400	120.06%
010	BEDFORD	837,068	11,456,231	10,619,163	56.35%
011	BLAND	65,113	711,278	646,165	35.21%
012	BOTETOURT	147,554	12,576,919	12,429,365	114.15%
013	BRUNSWICK	543,028	776,266	233,238	5.31%
014	BUCHANAN	673,865	7,699,566	7,025,701	87.90%
015	BUCKINGHAM	601,685	1,716,717	1,115,032	21.29%
016	CAMPBELL	955,043	13,724,422	12,769,379	94.27%
017	CAROLINE	648,718	3,194,940	2,546,222	27.03%
018	CARROLL	594,924	6,260,217	5,665,293	81.47%
019	CHARLES CITY	132,274	2,034,471	1,902,197	78.93%
020	CHARLOTTE	277,709	663,966	386,257	10.84%
021	CHESTERFIELD	3,463,433	96,035,123	92,571,690	73.24%
022	CLARKE	52,632	5,045,076	4,992,444	76.53%
023	CRAIG	45,197	758,330	713,133	49.23%
024	CULPEPER	1,044,339	11,728,134	10,683,795	61.18%
025	CUMBERLAND	300,737	1,289,672	988,935	37.09%
026	DICKENSON	321,011	2,480,422	2,159,411	49.34%
027	DINWIDDIE	575,865	4,382,436	3,806,571	43.86%
028	ESSEX	466,085	2,345,130	1,879,045	41.93%
029	FAIRFAX	15,548,197	979,030,893	963,482,696	114.30%
030	FAUQUIER	350,266	41,740,520	41,390,254	101.62%
031	FLOYD	280,106	1,383,218	1,103,112	23.04%
032	FLUVANNA	174,325	6,106,784	5,932,459	69.69%
033	FRANKLIN	1,595,516	11,908,685	10,313,169	51.00%
034	FREDERICK	878,853	36,534,240	35,655,387	115.19%
035	GILES	234,291	2,302,739	2,068,448	42.42%
036	GLOUCESTER	477,125	11,627,068	11,149,943	93.59%
037	GOOCHLAND	172,192	7,549,607	7,377,415	61.08%
038	GRAYSON	299,623	1,366,870	1,067,247	22.56%
039	GREENE	294,640	4,399,004	4,104,364	55.85%
040	GREENSVILLE	294,037	1,012,086	718,049	30.89%
041	HALIFAX	1,108,306	2,173,639	1,065,333	8.84%
042	HANOVER	439,136	27,439,782	27,000,646	59.45%
043	HENRICO	6,007,814	107,132,964	101,125,150	79.50%

FY 2015 Actual Required Local Match (RLM) for Incentive and Lottery Accounts Compared to Actual Local Expenditures for Operations Above Required Local Effort (RLE)

RLM Based on Chapter 665, 2015 Virginia Acts of Assembly,
Final March 31, 2015, Average Daily Membership (ADM), and Actual Participation Data

Div. Num.	Division Name	FY 2015 Required Local Match	FY 2015 Actual Local Expenditures for Operations Above RLE	FY 2015 Actual Local Expenditures for Operations Above RLE and RLM	Percent of FY 2015 Actual Local Expenditures for Operations Above RLE and RLM
044	HENRY	1,403,779	2,841,539	1,437,760	12.13%
045	HIGHLAND	68,252	363,985	295,733	17.18%
046	ISLE OF WIGHT	581,136	9,628,394	9,047,258	61.19%
047	JAMES CITY	1,105,299	33,881,921	32,776,622	86.99%
048	KING GEORGE	198,603	3,827,408	3,628,805	36.23%
049	KING QUEEN	335,420	924,830	589,410	19.75%
050	KING WILLIAM	216,175	3,436,068	3,219,893	66.35%
051	LANCASTER	668,776	4,471,685	3,802,909	58.56%
052	LEE	FY15 Data Resubmission Pending			
053	LOUDOUN	1,841,080	369,940,701	368,099,621	137.86%
054	LOUISA	1,102,605	14,280,216	13,177,611	73.22%
055	LUNENBURG	322,988	323,073	85	0.00%
056	MADISON	261,191	4,274,872	4,013,681	75.32%
057	MATHEWS	121,657	2,215,342	2,093,685	47.56%
058	MECKLENBURG	1,043,384	3,094,317	2,050,933	17.76%
059	MIDDLESEX	278,153	2,083,525	1,805,372	28.72%
060	MONTGOMERY	1,194,261	20,378,308	19,184,047	79.41%
062	NELSON	465,716	7,120,417	6,654,701	86.87%
063	NEW KENT	36,362	4,971,078	4,934,716	64.28%
065	NORTHAMPTON	920,150	2,152,571	1,232,421	19.26%
066	NORTHUMBERLAND	467,062	3,792,384	3,325,322	46.49%
067	NOTTOWAY	422,282	787,627	365,345	9.12%
068	ORANGE	623,546	7,483,029	6,859,483	59.54%
069	PAGE	536,135	4,262,506	3,726,371	55.49%
070	PATRICK	443,923	446,327	2,404	0.04%
071	PITTSYLVANIA	1,270,279	2,466,162	1,195,883	7.62%
072	POWHATAN	72,328	10,338,539	10,266,211	101.77%
073	PRINCE EDWARD	640,563	3,450,213	2,809,650	56.74%
074	PRINCE GEORGE	415,189	1,244,570	829,381	8.02%
075	PRINCE WILLIAM	7,324,370	198,721,784	191,397,414	90.52%
077	PULASKI	647,217	4,816,754	4,169,537	44.89%
078	RAPPAHANNOCK	170,232	3,610,914	3,440,682	68.99%
079	RICHMOND	187,422	2,235,758	2,048,336	66.69%
080	ROANOKE	741,221	26,907,795	26,166,574	79.89%
081	ROCKBRIDGE	463,342	5,249,391	4,786,049	53.17%
082	ROCKINGHAM	1,472,955	30,947,091	29,474,136	112.66%
083	RUSSELL	594,872	623,984	29,112	0.41%
084	SCOTT	290,126	521,525	231,399	4.44%
085	SHENANDOAH	899,823	11,742,967	10,843,144	78.01%
086	SMYTH	594,077	2,762,708	2,168,631	30.33%
087	SOUTHAMPTON	381,976	4,385,244	4,003,268	75.57%
088	SPOTSYLVANIA	1,444,823	46,914,172	45,469,349	85.67%
089	STAFFORD	804,063	53,580,393	52,776,330	93.45%

FY 2015 Actual Required Local Match (RLM) for Incentive and Lottery Accounts Compared to Actual Local Expenditures for Operations Above Required Local Effort (RLE)

RLM Based on Chapter 665, 2015 Virginia Acts of Assembly,
Final March 31, 2015, Average Daily Membership (ADM), and Actual Participation Data

Div. Num.	Division Name	FY 2015 Required Local Match	FY 2015 Actual Local Expenditures for Operations Above RLE	FY 2015 Actual Local Expenditures for Operations Above RLE and RLM	Percent of FY 2015 Actual Local Expenditures for Operations Above RLE and RLM
090	SURRY	438,768	6,691,421	6,252,653	111.00%
091	SUSSEX	380,556	5,221,268	4,840,712	145.16%
092	TAZEWELL	830,433	3,209,421	2,378,988	20.93%
093	WARREN	561,157	9,025,874	8,464,717	66.35%
094	WASHINGTON	1,134,144	12,848,036	11,713,892	67.42%
095	WESTMORELAND	611,892	1,290,306	678,414	10.31%
096	WISE	953,349	6,539,490	5,586,141	56.22%
097	WYTHE	612,387	4,406,202	3,793,815	44.07%
098	YORK	248,291	23,432,137	23,183,846	75.20%
101	ALEXANDRIA	5,111,724	120,622,443	115,510,719	146.66%
102	BRISTOL	511,251	1,672,075	1,160,824	24.55%
103	BUENA VISTA	64,166	1,068,890	1,004,724	81.03%
104	CHARLOTTESVILLE	1,896,939	27,745,658	25,848,719	133.26%
106	COLONIAL HEIGHTS	262,509	11,725,526	11,463,017	147.50%
107	COVINGTON	201,869	2,807,534	2,605,665	135.24%
108	DANVILLE	1,907,203	6,195,467	4,288,264	36.11%
109	FALLS CHURCH	38,532	24,821,721	24,783,189	196.40%
110	FREDERICKSBURG	1,111,863	13,103,095	11,991,232	81.42%
111	GALAX	282,982	907,817	624,835	23.84%
112	HAMPTON	3,632,921	39,900,815	36,267,894	94.53%
113	HARRISONBURG	1,966,797	15,895,295	13,928,498	88.48%
114	HOPEWELL	953,975	4,943,276	3,989,301	59.42%
115	LYNCHBURG	2,457,040	18,520,498	16,063,458	75.68%
116	MARTINSVILLE	494,682	3,629,083	3,134,401	87.16%
117	NEWPORT NEWS	6,202,452	55,167,391	48,964,939	87.82%
118	NORFOLK	9,216,054	62,150,884	52,934,830	81.06%
119	NORTON	122,292	155,938	33,646	1.89%
120	PETERSBURG	1,252,453	5,672,191	4,419,738	59.58%
121	PORTSMOUTH	3,231,219	29,095,907	25,864,688	98.77%
122	RADFORD	152,847	2,060,029	1,907,182	67.95%
123	RICHMOND CITY	11,300,479	64,390,581	53,090,102	64.03%
124	ROANOKE CITY	4,866,529	43,141,073	38,274,544	113.29%
126	STAUNTON	674,181	5,256,229	4,582,048	69.10%
127	SUFFOLK	2,302,958	19,682,049	17,379,091	55.86%
128	VIRGINIA BEACH	6,215,553	196,838,204	190,622,651	113.77%
130	WAYNESBORO	775,802	7,378,344	6,602,542	95.45%
131	WILLIAMSBURG	179,748	3,746,626	3,566,878	73.56%
132	WINCHESTER	1,071,292	16,220,493	15,149,201	120.64%
134	FAIRFAX CITY	114,940	18,142,635	18,027,695	101.68%
135	FRANKLIN CITY	435,209	3,274,836	2,839,627	105.44%
136	CHESAPEAKE	3,368,936	92,703,475	89,334,539	98.34%
137	LEXINGTON	7,140	1,078,745	1,071,605	56.55%
138	EMPORIA	245,316	833,304	587,988	30.38%

FY 2015 Actual Required Local Match (RLM) for Incentive and Lottery Accounts Compared to Actual Local Expenditures for Operations Above Required Local Effort (RLE)

RLM Based on Chapter 665, 2015 Virginia Acts of Assembly,
Final March 31, 2015, Average Daily Membership (ADM), and Actual Participation Data

Div. Num.	Division Name	FY 2015 Required Local Match	FY 2015 Actual Local Expenditures for Operations Above RLE	FY 2015 Actual Local Expenditures for Operations Above RLE and RLM	Percent of FY 2015 Actual Local Expenditures for Operations Above RLE and RLM
139	SALEM	209,807	10,137,809	9,928,002	115.96%
142	POQUOSON	12,425	4,696,091	4,683,666	97.98%
143	MANASSAS	1,518,359	28,698,753	27,180,394	140.15%
144	MANASSAS PARK	458,513	5,682,861	5,224,348	81.68%
202	COLONIAL BEACH	66,919	643,027	576,108	37.83%
207	WEST POINT	8,106	3,500,262	3,492,156	281.98%